

S2035E Assembly Guide

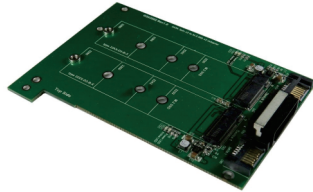
M.2 (NGFF) SSD Dual Port to SATA Adapter

Before Assembling:

1. Please check the accessory list before assembly. Contact your local dealer if you find any parts missing.
2. Please read through the assembly guide.

3.5" Bracket




S2035x Adapter

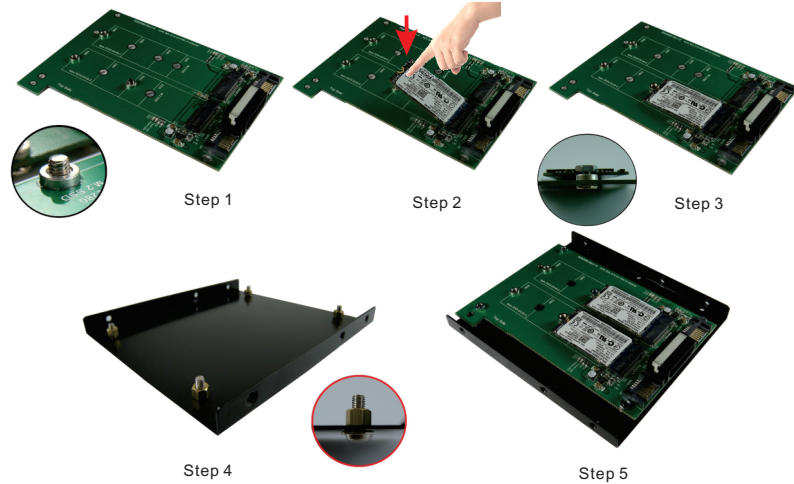


M.2 SSD Accessory Package

- | | | |
|--|---|----------------------|
| (1)M3x3 Screw *1pc
P/N: 13MISW00010M11 |  | [for M.2 (2280) SSD] |
| (2)M3x5 Screw *1pc
P/N: 13MISW00005M11 |  | [for M.2 NGFF SSD] |
| (3)M3 Nut *1pc
P/N: 13MINU00002M11 |  | [for M.2 NGFF SSD] |
| (4)Copper Nut /H: 1.45mm *1pc
P/N: 13MICA00001M05 |  | |

3.5" Frame Bracket Accessory Package

- | | |
|---|---|
| (4)M3x8 Screw *4pcs
P/N: 13MISW00006M11 |  |
| (5)M3x4mm Cooper nut *4pcs
P/N: 13MICP00003M11 |  |
| (6)M2 Nut *4pcs
P/N: 13/MINU00002M11 |  |



Step 1: Put copper nut on the same side of the NGFF connector; and screw M3x5mm screw from bottom to top of the adapter.

Step 2: Insert M.2 NGFF SSD into M.2 67pin socket. Press down M.2 NGFF SSD and aim to the copper nut hole. (Figure 3)

Step 3: Using M3 nuts to fixed M.2 NGFF SSD on the adapter (Figure 4), namely complete the installation.

If your M.2 NGFF SSD is 2280 form factor, pls ignore step 1. Use M3 x 3 Screw to fix M.2 NGFF SSD.

-----Two M.2 SSD are using the same installation -----

Step 4: Put M3x8 screw from bottom side to top side of 3.5" frame and fix with M3x4 copper nut.

Step 5: Fixed assembled M.2 SSD + Adapter on 3.5" frame with M3 nut.