

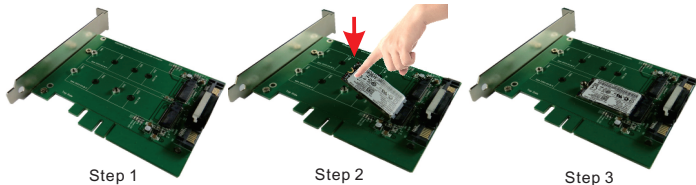
M.2 (NGFF) SSD Dual Port to SATA Adapter

Before Assembling:

1. Please check the accessory list before assembly. Contact your local dealer if you find any parts missing.
2. Please read through the assembly guide.

M.2 SSD Accessory Package

(1)M3x3 Screw *1pc P/N: 13MISW00010M11		[for M.2 (2280) SSD]
(2)M3x5 Screw *1pc P/N: 13MISW00005M11		[for M.2 NGFF SSD]
(3)M3 Nut *1pc P/N: 13MINU00002M11		[for M.2 NGFF SSD]
(4)Copper Nut /H: 1.45mm *1pc P/N: 13MICA00001M05		



Step 1: Put copper nut on the same side of the NGFF connector; and screw M3x5mm screw from bottom to top of the adapter.

Step 2: Insert M.2 NGFF SSD into M.2 67pin socket. Press down M.2 NGFF SSD and aim to the copper nut hole. (Figure 3)

Step 3: Using M3 nuts to fix M.2 NGFF SSD on the adapter (Figure 4), namely complete the installation.

If your M.2 NGFF SSD is 2280 form factor, pls ignore step 1.
Use M3 x 3 Screw to fix M.2 NGFF SSD.

-----Two M.2 SSD are using the same installation -----